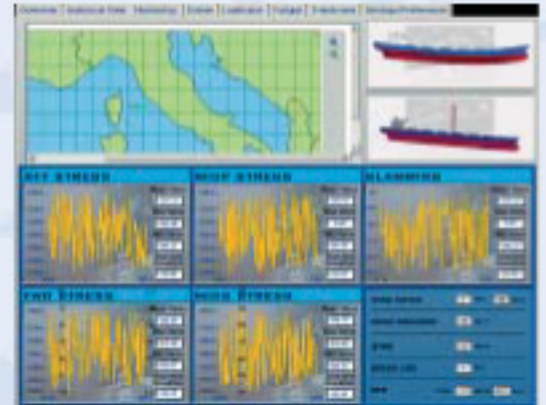


GLAFCOS MARINE introduces the most advanced Hull Monitoring System: NAUTCARE



- Monitor, analyze and record the actual hull responses in real time.
- Integrates marine devices and mapping system
- Comes with an embedded approved loading software

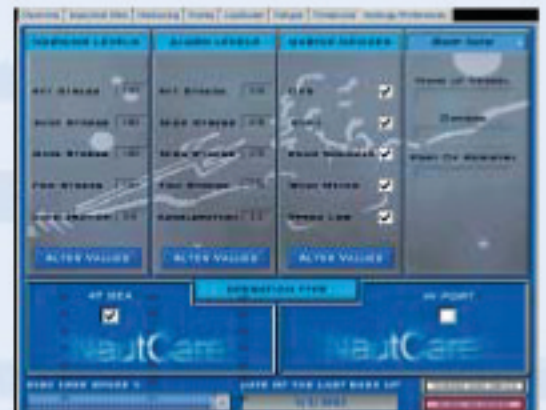
- Easily expandable to include torsional stresses, draught monitoring in port and many other features
- Easily upgradeable to host voyage planning and decision support modules



- Provides a means of continuous review of ship's fatigue life, which can be used to priorities maintenance requirements
- Provides the ability to document that the ship has been operated within the statutory rules
- Provides the ability to document that the cargo has been properly handled in the case of insurance claims



- Use network technology to retain signal quality by reduced noise interference
- Easy to install
- Intrinsically safe



- Advanced, comprehensive user interface
- Network technology that can host signal transmission for other systems

